

Definitions:

- Artificial selection is _____
- Natural selection is _____
- Adaptations are _____

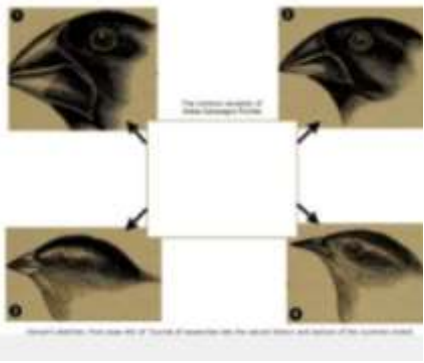
Evolution is

The evidence from the fossil record shows that

Homologous structures provide evidence that



Divergent evolution in Finches



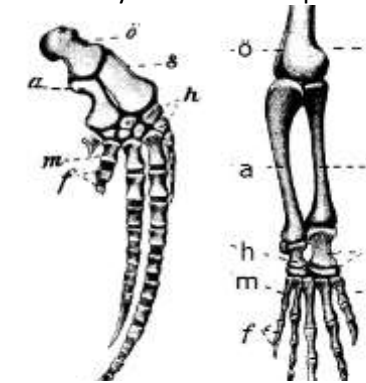
How does divergent evolution occur?

- _____
- _____
- _____
- _____

Compare the pentadactyl limbs in the diagram on the right

dolphin	monkey

Pentadactyl limbs of a dolphin & monkey



Explain selection pressure.



Classification taxa = K _____, P _____, C _____, O _____, F _____, G _____, s _____

Plant phyla: _____, _____, _____, _____

Animal phyla: _____, _____, _____, _____, _____, _____

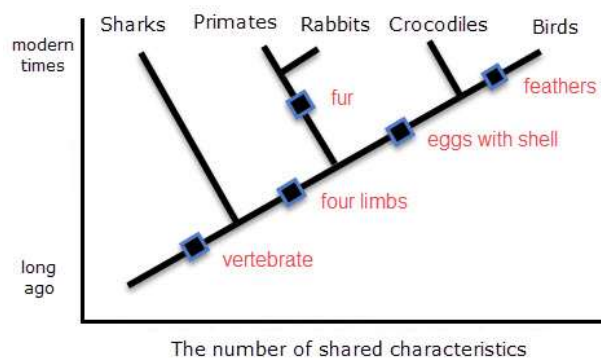
Animal groups in the Chordata phylum: _B _____ _M _____ _A _____ _R _____ _F _____

The three domains of living things are: _____

Features of plants (all groups required)

Phylum	Main features
Bryophyta	
Filicinophyta	
Coniferophyta	
Angiospermophyta	

A cladogram



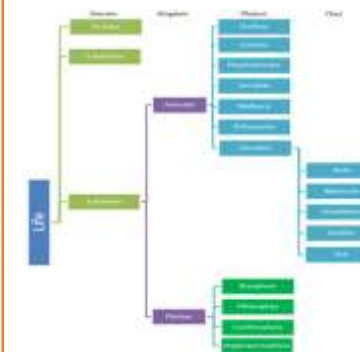
Analysis of evolutionary relationships using a cladogram

Using the cladogram on the left identify the closest relative of the crocodiles

Suggest whether the last common ancestor of primates and crocs had four limbs

Explain how the diagram shows the approximate date of the last common ancestor of two species

Classification groups in a cladogram



Evidence from cladistics (DNA analysis in particular) has caused reclassification of some groups. Explain why.

